



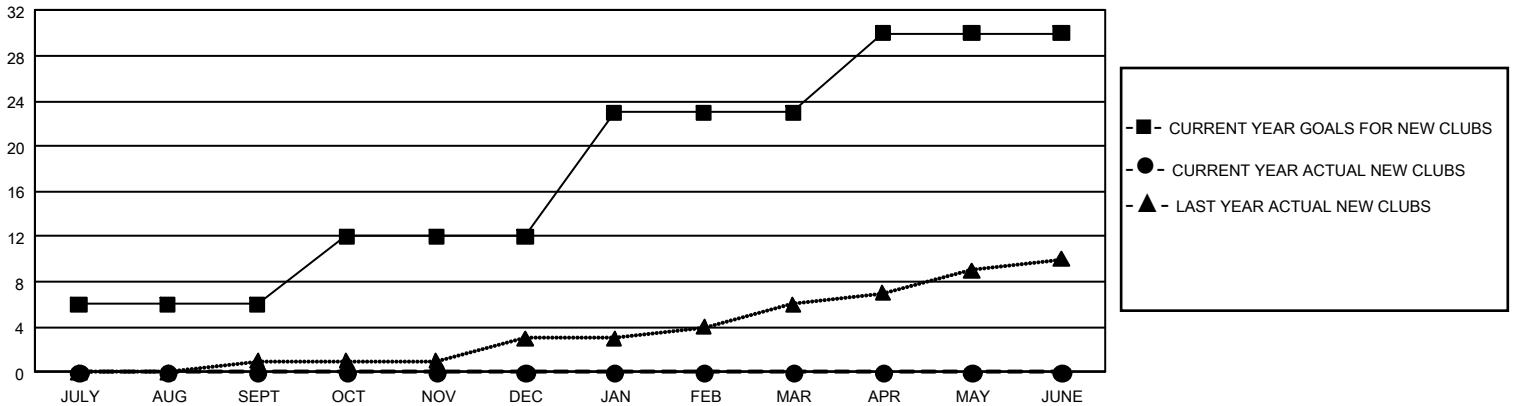
GMT Constitutional Area 1, Group M

GMT: OPEN

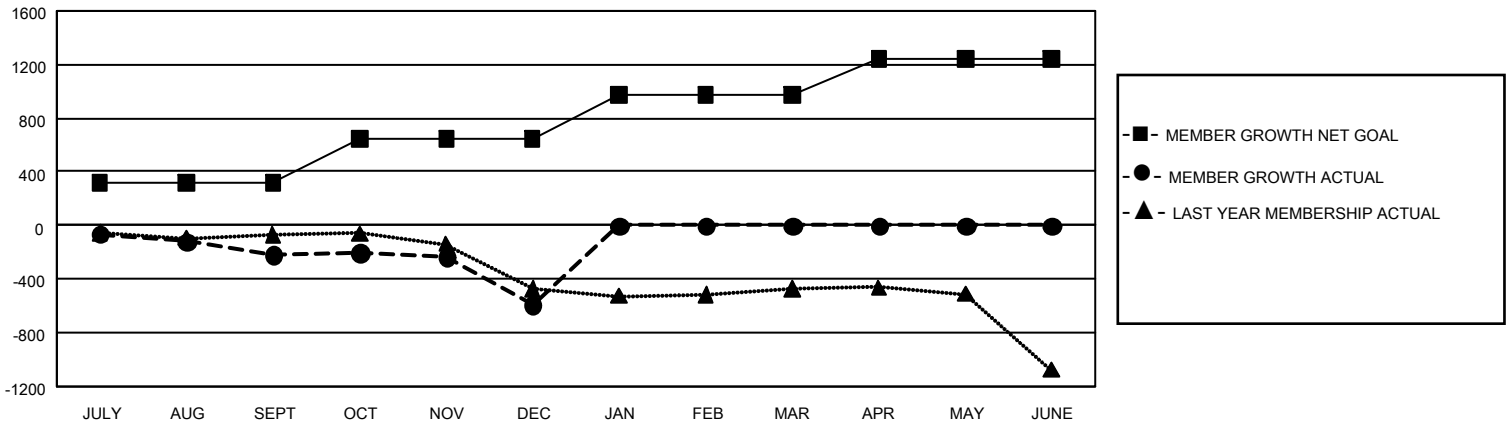
REPORT DOES NOT INCLUDE CLUBS IN UNDISTRICTED AREAS.

Clubs				Members			
RESULTS FOR 2019-2020				RESULTS FOR 2019-2020			
QUARTER	NEW CLUB GOAL	NEW CLUBS	DROPPED CLUBS	QUARTER	MEMBER GROWTH NET GOAL	MEMBER GROWTH ACTUAL	DROPPED MEMBERS ACTUAL (including transfers)
JULY/AUG/SEPT	18	0	6	JULY/AUG/SEPT	960	536	623
OCT/NOV/DEC	18	0	8	OCT/NOV/DEC	972	477	767
JAN/FEB/MAR	33	0	0	JAN/FEB/MAR	990	0	0
APR/MAY/JUNE	21	0	0	APR/MAY/JUNE	801	0	0

GOALS AND ACTUAL NEW CLUBS CUMULATIVE



GOALS AND ACTUAL MEMBERS CUMULATIVE



DROPPED CLUBS: 14	324 CLUBS OF 844 ADDED 1 OR MORE NEW MEMBERS	GENDER DISTRIBUTION
		MALE 11,878 (64.25%)
		FEMALE 6,608 (35.75%)
DROPPED MEMBERS	CLICK HERE FOR CUMULATIVE MEMBERSHIP DATA	TOTAL FAMILY UNIT MEMBERS 3,908
DECEASED 147		FAMILY MEMBERS PAYING HALF DUES 2,001
CLUB CANCELLED 138		
OTHER 1,104		
TOTAL 1,389		